

# niroflex 2000®

[www.niroflex.com](http://www.niroflex.com)

INCLUDES  
NEW 2024  
STYLES!



**ULTIMATE HYGIENE ON THE *CUTTING EDGE***

## Metal Mesh Gloves & Apparel

**THE *ONLY* USDA  
ACCEPTED METAL  
MESH GLOVES  
& GARMENTS!**



The Original, All Steel, Metal Mesh Glove.

niroflex USA

niroflex 2000<sup>®</sup>  
METAL MESH GLOVES



GU-2500  
Wrist Length



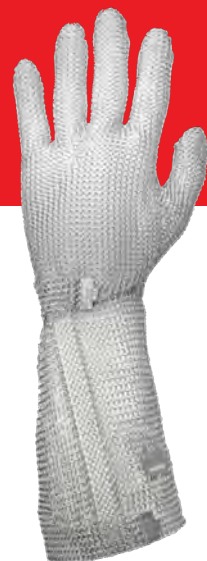
GU-2504  
3" Extended Cuff



GU-2509  
6" Extended Cuff



GU-2515  
9" Extended Cuff



GU-2532  
Shoulder Length



ALL GLOVES  
ARE REVERSIBLE  
TO FIT EITHER  
HAND!

NIROFLEX2000 IS ALSO AVAILABLE IN **SUPER DETECTABLE (SD)** MESH **niroflex<sup>SD</sup>** AND IN **TITANIUM** CONSTRUCTION, PROVIDING METAL MESH SAFETY AT HALF THE WEIGHT **TITAN2000** by **niroflex**

Today, you need the dual protection of Niroflex2000<sup>®</sup> metal mesh gloves. Niroflex2000 is the first and only ultra-hygienic mesh glove designed to protect the hands of your workers and safeguard your food from contamination. More than 12,000 tiny reinforced links and the proprietary Niroflex clip closure system guarantee a secure, comfortable custom fit for every worker. Niroflex2000's natural hand shape and food-safe TPU stiffener (*on extended cuff styles*) make it the most comfortable mesh glove available.

niroflex *easyfit*

No fabric straps to absorb liquid, harbor bacteria or get dirty! Field replaceable plastic (*Thermoplastic Polyurethane/TPU*) straps offer optimum hygiene properties.

NEW  
STYLE



GE-2500  
Wrist Length



GE-2504  
3" Extended Cuff



GE-2512  
7.5" Extended Cuff



niroflex slide-N-snap

The most innovative design in mesh gloves in decades. Patented design includes replaceable plastic straps and buckle for a simple and hygienic solution.

NEW  
STYLE



GU-2500SNS  
Wrist Length



GU-2504SNS  
3" Extended Cuff



GU-2512SNS  
7.5" Extended Cuff



ALL STYLES



niroflex mailite<sup>®</sup>

Niroflex2000 all steel design in a "BIG RING" glove for use when the knife point exposure is minimal.

SUPER  
DETECTABLE  
NEW  
STYLE



GU-2750  
Wrist Length



GS-100  
Glove  
Tensioner

Even though our mesh gloves are the most ergonomically-correct mesh gloves in the world, the loose nature of ring mesh can still sometimes be a challenge for proper fit. We offer a simple, sanitary polymeric mesh glove tensioner that fits over the mesh glove on the back of the hand and provides a tighter fit for the working area of the palm and fingers without hindering comfort or dexterity. Sold by the pack of 100 each.

# MESHWEAR® by niroflex

## APPAREL & APRONS

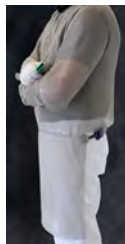
**JUST LIKE OUR GLOVES, OUR GARMENTS HAVE NO FABRIC STRAPS. ALL NIROFLEX GARMENTS COME WITH LIQUID-RESISTANT & FOOD-SAFE TPU (THERMOPLASTIC URETHANE) STRAPS**

### S4-12SS | Short Vest S4-28SS-NS | Double Sleeve (No Straps)



We are experts at custom design garments. Even if a garment is not listed here, we can make it!

### S4-9130HBT | Half Back Tunic S4-2234A | Apron



#### ITEM DESCRIPTION

##### Sleeves - Available in Sizes S-XL

<b>S4-28S</b>	Single Sleeve, Full Arm with Adjustable TPU Straps
<b>S4-28SS</b>	Double Sleeve, Full Arm with Adjustable TPU Straps
<b>S4-28SS-NS</b>	Double Sleeve, Full Arm STRAPLESS Design

##### Tunics - Available in Sizes XS-2XL

<b>S4-12SS</b>	Short Vest, 12" Front & Back with Double Mesh Sleeves
<b>S4-9130HBT</b>	Half Back, Bolero Tunic with Full Sleeves (Back is Approx. to Waist)
<b>S4-9130HBT-SL</b>	Bolero Tunic, Full Split-Leg Front, Half Back (Back is Approx. to Waist)
<b>S4-9171FBT</b>	Bolero Tunic, Full Front, Full Back (Back is Approx. to the Same Length as the Front)

##### Aprons

<b>S4-2222A</b>	Apron, 22" Width, 22" Length
<b>S4-2230A</b>	Apron, 22" Width, 30" Length
<b>S4-2234A</b>	Apron, 22" Width, 34" Length
<b>S4-2240A</b>	Apron, 22" Width, 40" Length
<b>S4-2534A</b>	Apron, 25" Width, 34" Length
<b>S4-2540A</b>	Apron, 25" Width, 40" Length
<b>S4-2534ASL</b>	Apron, Split Leg, 25" Width, 34" Length
<b>S4-2540ASL</b>	Apron, Split Leg, 25" Width, 40" Length

##### Big Ring Aprons

<b>S7-2222A</b>	Big Ring Apron, 22" Width, 22" Length
<b>S7-2230A</b>	Big Ring Apron, 22" Width, 30" Length
<b>S7-2234A</b>	Big Ring Apron, 22" Width, 34" Length
<b>S7-2240A</b>	Big Ring Apron, 22" Width, 40" Length
<b>S7-2534A</b>	Big Ring Apron, 25" Width, 34" Length
<b>S7-2540A</b>	Big Ring Apron, 25" Width, 40" Length
<b>S7-2534ASL</b>	Big Ring Apron, Split Leg, 25" Width, 34" Length
<b>S7-2540ASL</b>	Big Ring Apron, Split Leg, 25" Width, 40" Length

## NIROFLEXUSA HAS THE ONLY MESH SAFETY PRODUCTS TO:



1. Be included on the USDA Accepted Equipment List



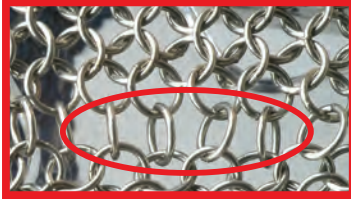
2. Meet the strict requirements of Europe's (CE) EN1082-1 mesh glove requirements and DIN EN ISO 13998:2003 (Protection level 2) for aprons and garments



3. Be produced from mesh made in an ISO certified facility

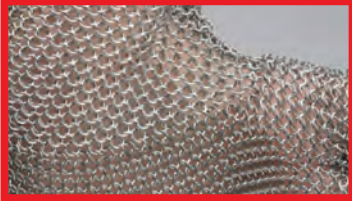
## WHY CHOOSE **niroflex**?

"OTHER"  
MESH GLOVES



Most other mesh gloves are assembled with joining rings simply attaching adjacent parts. As a result, the gaps at glove seams can be more than 6 mm, easily big enough for a knife point.

**niroflex 2000**



**Niroflex2000® gloves** are assembled by weaving the joining ring around (*over and under*) at least 4 adjacent rings, in exactly the same way as the basic mesh material is interlocked. As a result, the seams on Niroflex2000 gloves are as strong, safe and secure as any other part of the glove and the maximum gap is only 3 mm.



### NIROFLEX2000 HELPS COMPANIES KEEP TRACK OF THEIR MESH GLOVES, A VALUABLE ASSET

Metal detectable, color-coded (*by size*) numerical bar code tags are standard on all Niroflex2000 gloves. Record the number when you issue the glove to an employee and make certain that it is returned on time. Niroflex2000 tags can also help with HACCP compliance, as the tags can be used to track cleaning schedules of mesh gloves. Niroflex aprons and garments also come with metal detectable serial tags that clearly show the style number and key measurements.



### NIROFLEX2000'S DESIGN IS INHERENTLY SANITARY!

Niroflex2000 gloves have no place for bacteria to hide, no fabric straps, no buckles, no studs, no rubber bands, and no springs so they clean quickly and easily without contamination risk.



### NIROFLEX2000 SAVES YOU MONEY!

Up to <sup>2</sup>/<sub>3</sub> of all mesh gloves sent in for repairs need fabric straps replaced. Switch to Niroflex2000 and eliminate unnecessary repairs. Plus, you can reduce your mesh glove stocking requirements by sending fewer gloves for repairs.



### ONLY NIROFLEX2000 HAS NIROFLEX TPU STIFFENERS, WHICH:

- Stand up to cleaning chemicals and steam cleaning
- Have excellent bacteria resistance
- Have excellent resistance against oils, fat, blood, diluted bleaches and acids
- Stay flexible in very cold and very hot temperatures (*up to 110°C / 230°F*)
- Are recyclable